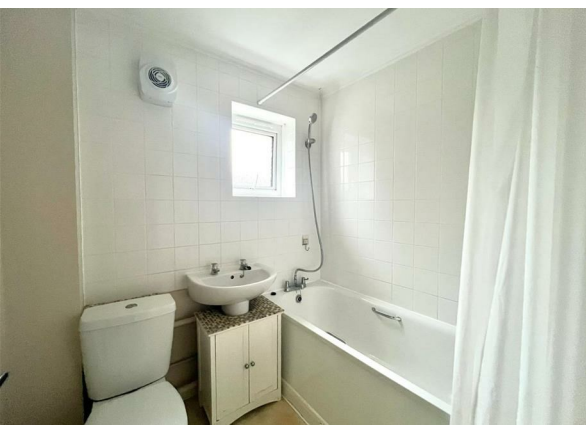
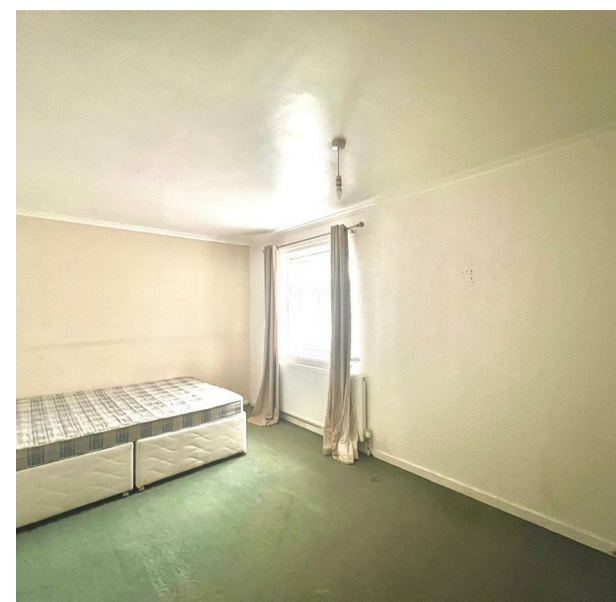


186 Westfield, Harlow, CM18 6AW
£1,800 Per Month

COMPLETION
SALES & LETTINGS



186 Westfield, Harlow, CM18 6AW

£1,800 Per Month

Council Tax Band: C

Nestled in the heart of Westfield, Harlow, this charming two-bedroom terraced house is now available to let for £1,800 per calendar month. Spanning an inviting 797 square feet, this property offers a comfortable and practical living space, perfect for individuals or small families seeking a welcoming home.

The house features a well-proportioned reception room, ideal for relaxation or entertaining guests. The two bedrooms provide ample space for rest and personalisation, ensuring a peaceful retreat at the end of the day. The bathroom is conveniently located, catering to the needs of modern living.

Built in 1960, this property combines classic charm with contemporary convenience, making it a delightful choice for those looking to settle in a vibrant community. The surrounding area boasts a variety of local amenities, including shops, parks, and excellent transport links, ensuring that everything you need is within easy reach.

This terraced house is not just a place to live; it is a home where memories can be made. If you are seeking a comfortable and well-located property in Harlow, this could be the perfect opportunity for you. Do not miss the chance to make this lovely house your new home.







337 Forest Road

London

E17 5JR

02085277007

enquiries@completion.co.uk

completion.co.uk

